

Product Catalog



Table of Contents

Safety Storage Cabinets

Safety Storage Cabinets.....	3
Containment Classification & Product Information.....	4
Flammable Storage - Cans.....	5
Flammable Storage - Drums.....	6
Acid & Corrosive Storage / Polyethylene Cabinets.....	7
Paint & Ink Storage / Spill Containment Cabinet.....	8
Hazardous Waste Storage.....	9
Pesticide Storage / Laboratory Storage.....	10
Wall Mount & Stackable Storage.....	11
Aluminum LP / Oxygen Gas Cylinder Storage / Vertical LP Storage.....	12
Medical Gas Storage Cabinets.....	13
Outdoor Weatherproof Flammable Storage.....	14
Industrial & Commercial Storage / Mobile Storage.....	15
Stainless Steel Storage.....	16
Custom Cabinets.....	17

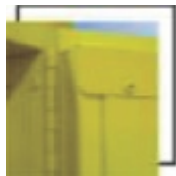
Chemical Storage Buildings

Hazmat Storage Buildings.....	18
Chemical Storage Buildings.....	19
TornadoShelters.....	20
Explosive Storage Magazines.....	21
Battery Storage Building.....	22
CustomBuildings.....	23

Code Compliance

Code Compliance Cabinets.....	24
Outdoor Safety Storage FAQ.....	27

Features & Specifications



Double Wall Construction
with 1 1/2" Air Space
NFPA 30, OSHA, FM 6050

Large Warning Label
(also available in French & Spanish)
NFPA 30, OSHA 1910. 106 FM 6050

Fusible Link Assembly
on Self-Closing Models



Non-sparking closure w/
3-Point, Self-Latching Doors
NFPA 30, OSHA 1910. 106
FM 6050

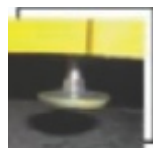
Flush Mounted/Padlockable
Locking Handle



Structurally Reinforced 18-Gauge
All-Welded Construction
NFPA 30, OSHA1910. 106, FM 6050



Continuous
Piano Hinge



Adjustable Zinc Plated
Leveling Legs

Finished in Chemical, UV &
Impact Resistant Urethane

Leak Proof Sill 2" Deep,
Prevents Leakage in the
Event of Accident Spills
NFPA 30, OSHA 1910. 106
FM 6050



Safety Begins With Securall

Securall's innovative design features and conscientious customer service continue to be the benchmark of excellence in the safety storage industry. Our dedication to quality, delivery and manufacturing efficiencies has established Securall as an industry leader in safety storage cabinets and buildings while our commitment to customers' needs has resulted in the most comprehensive line of safety storage products available.

If you have a special situation that requires a customized design, we will welcome the opportunity to work with you to provide a safe storage solution.

Make Securall your primary source for quality safety storage and security products.

Containment Classifications

NFPA Flammable & Combustible Classes

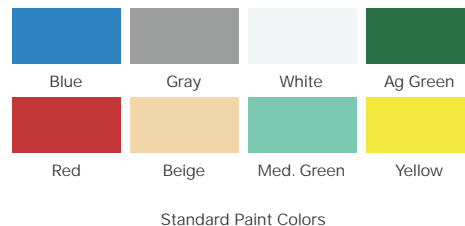
Flammables	Flash Point	Boiling Point	Combustibles	Flash Point	Boiling Point
Class IA	<73F (22.8C)	<100F (37.8C)	Class IIA	<100F (37.8C) and <140F (60C)	-
Class IB	<73F (22.8C)	<100F (37.8C)	Class IIB	<140F (60C) and <200F (93C)	-
Class IC	<73F (22.8C) and <100F (37C)	-	Class IIC	<200F (93C)	-

A maximum of 120 - gallons of Class I, Class II, and Class IIIA liquids may be stored in a single storage cabinet. The number of cabinets in a single fire area may not exceed 3. Proper storage of additional cabinets within a single fire area is limited to groups no larger than 3, so long as a minimum of 100ft separation exists between all groups. The maximum number of cabinets in any one group may be increased to 6 if the cabinets are stored in an Industrial Occupancy facility that is equipped with an automatic sprinkler system meeting NFPA 13 standards for installation.

SECURALL® utilizes a 3-point, non-sparking button latch rod system that provides the ultimate in security, safety and compliance. Since all work surfaces are not level, each cabinet is equipped with (4) Leveling Legs to level the cabinet and doors for successful closure every time. Additionally, all Self-Close Door models are equipped with Fusible Links to hold doors open while accessing contents of cabinet. When properly used, links are designed to melt at 165°F, which allows the doors to close automatically in case of fire.

Paint

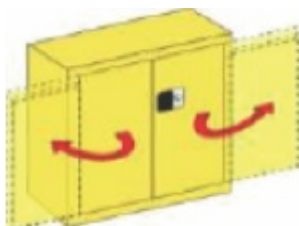
The interior and exterior finish consists of an aliphatic polyurethane finish. This polyurethane coating has chemical properties to withstand salt spray, chemical rub, fading due to UV exposure and other tests performed on epoxy paints. Urethane is more durable under conditions when moving items in and out of the cabinet as it resists chipping and peeling. Unless some other color is specified, cabinets will ship in designated standard color. For custom colors, customer must provide a paint chip.



Door Configuration

Self-Latch, Standard 2-Door

Denoted as a 100 series model no.

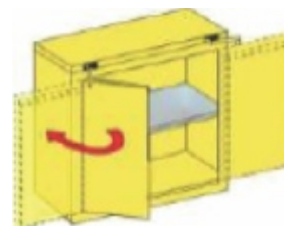


Self-Close, Self-Latch Sliding Door

Denoted as a 200 series model no.

Self-Close, Self-Latch Safe-T-Door

Denoted as a 300 series model no.



Flammable Storage - Cans

Keep flammable liquids close to the work area in a safe and organized way while limiting employee exposure with SECURALL® Safety Storage Cabinets. You can choose from a large selection of sizes from 4 to 90-gallon capacities. These cabinets are designed to meet safety requirements whenever a job involves the handling of flammable or combustible liquids. Smaller cabinets are convenient where space is limited. Standard color is Yellow. All cabinets comply with current OSHA regulations and are designed in accordance with the standards of NFPA Code 30.



Model #A230



Model #A145



Model #A305

Cabinets For Storing Flammables in Safety Cans/Containers

Model #	Test Lab Approv.	Description	# of Shelves	Exterior Dim. (H" x W" x D")	Approx. Ship Wt.	Addnl. Shelves	Approx. Ship Wt.
A102	*~	4 Gal. Self-Latch Standard Door	1	22 x 17 x 17	75 lbs.	S17-05	3 lbs.
A302	*~	4 Gal. Self-Close, Self-Latch Safe-T-Door	1	24 x 17 x 17	82	S17-05	3
A105	FM*~	12 Gal. Self-Latch Standard Door	1	35 x 24 x 18	138	S1-05	5
A305	FM*~	12 Gal. Self-Close, Self-Latch Safe-T-Door	1	37 x 24 x 18	148	S1-05	5
A110	FM*~	16 Gal. Self-Latch Standard Door	1	44 x 24 x 18	164	S1-05	5
A310	FM*~	16 Gal. Self-Close, Self-Latch Safe-T-Door	1	46 x 24 x 18	174	S1-05	5
A122	FM*~	22 Gal. Self-Latch Standard Door	3	65 x 24 x 18	164	S1-05	5
A322	FM*~	22 Gal. Self-Close, Self-Latch Sliding Door	3	67 x 24 x 18	174	S1-05	5
A130	FM*~	30 Gal. Self-Latch Standard 2-Door	1	44 x 43 x 18	247	S2-05	12
A230	FM*~	30 Gal. Self-Close, Self-Latch Sliding Door	1	44 x 43 x 18	252	S2-05	12
A330	FM*~	30 Gal. Self-Close, Self-Latch Safe-T-Door	1	46 x 43 x 18	267	S2-05	12
A131	FM*~	30 Gal. Self-Latch Standard 2-Door	1	35 x 36 x 24	220	S15-05	13
A231	FM*~	30 Gal. Self-Close, Self-Latch Sliding Door	1	35 x 36 x 24	223	S15-05	13
A331	FM*~	30 Gal. Self-Close, Self-Latch Safe-T-Door	1	37 x 36 x 24	235	S15-05	13
A145	FM*~	45 Gal. Self-Latch Standard 2-Door	2	65 x 43 x 18	337	S2-05	12
A245	FM*~	45 Gal. Self-Close, Self-Latch Sliding Door	2	65 x 43 x 18	342	S2-05	12
A345	FM*~	45 Gal. Self-Close, Self-Latch Safe-T-Door	2	67 x 43 x 18	357	S2-05	12
A160	FM*~	60 Gal. Self-Latch Standard 2-Door	2	65 x 31x 31	372	S3-05	17
A260	FM*~	60 Gal. Self-Close, Self-Latch Sliding Door	2	65 x 31x 31	377	S3-05	17
A360	FM*~	60 Gal. Self-Close, Self-Latch Safe-T-Door	2	67 x 31x 31	394	S3-05	17
A190	FM*~	90 Gal. Self-Latch Standard 2-Door	2	65 x 43 x 31	443	S4-05	21
A290	FM*~	90 Gal. Self-Close, Self-Latch Sliding Door	2	65 x 43 x 31	448	S4-05	21
A390	FM*~	90 Gal. Self-Close, Self-Latch Safe-T-Door	2	67 x 43 x 31	473	S4-05	21
A1120	FM*~	120 Gal. Self-Close, Self-Latch Sliding Door	2	65 x 56 x 31	581	S6-05	28
A3120	FM*~	120 Gal. Self-Close, Self-Latch Safe-T-Door	2	67 x 56 x 31	610	S6-05	28

Caster Assembly

Casters are constructed of heavy gauge galvanized steel; each assembly provides a wide, sturdy base and enables cabinets to be moved from one area to another safely, without tipping over. Each assembly set comes with one pair of rigid locking casters and one pair of swivel locking casters. Casters are available in colors to

match all SECURALL® Safety Cabinet colors.

Cabinet Accessories

Model #	Description	Approx. Ship Wt.
CA18	Caster Assembly for cabinets 18" deep	30 lbs.
CA24	Caster Assembly for cabinets 24" deep	30
CA31	Caster Assembly for cabinets 31" deep	36
CA34	Caster Assembly for cabinets 34" deep	36

* Complies with OSHA Regulations
 FM Factory Mutual Tested and Approved
 - Designed in Accordance with Specifications set forth by the National Fire Protection Association

Flammable Storage - Drums

Flammable drum storage cabinets offer safe, convenient and centralized storage for flammables and are available in models to store drums in vertical position. Vertical Cabinets have ball bearing Roller Bottoms for easy placement and removal of 55-gallon drums. Also, depending on the model, 1 to 12 5-gallon safety cans can be stored on the provided 18-gauge galvanized steel shelving.

Door styles include manual, sliding or self-closing. Self-closing doors have fusible link that melts at 165°F allowing the door to automatically close. Cabinets meet OSHA and NFPA Code 30 regulations. Standard color is Yellow.



Model #V260



Model #V1110



Model #V3110

Cabinets For Storing Flammables in Drums

Model #	Test Lab Approv.	Description	# of Shelves	Exterior Dim. (H" x W" x D")	Approx. Ship Wt.	Addtnl. Shelves	Approx. Ship Wt.
V160	FM*~	65 Gal. Ver. Self-Latch Standard 2-Door	1	65 X 31 X 31	382	S9-05	16 lbs.
V260	FM*~	65 Gal. Ver. Self-Close, Self-Latch Sliding Door	1	65 X 31 X 31	400	S9-N	20
V360	FM*~	65 Gal. Ver. Self-Close, Self-Latch Safe-T-Door	1	67 X 31 X 31	404	S9-05	16
V175	FM*~	75 Gal. Ver. Self-Latch Standard 2-Door	1	65 X 43 X 31	419	S2-05	12
V275	FM*~	75 Gal. Ver. Self-Close, Self-Latch Sliding Door	1	65 X 43 X 31	424	S2-05	12
V375	FM*~	75 Gal. Ver. Self-Close, Self-Latch Safe-T-Door	1	67 X 43 X 31	448	S2-05	12
V1110	FM*~	120 Gal. Ver. Self-Latch Standard 2-Door	1	65 X 56 X 31	581	S5-05	21
V3110	FM*~	120 Gal. Ver. Self-Close, Self-Latch Safe-T-Door	1	67 X 56 X 31	610	S5-05	21
V1500	FM*~	115 Gal. Ver. Self-Latch Standard 2-Door	2	65 X 56 X 31	600	S19-05	10

Ramps

Heavy-duty steel ramp has reinforced side edging, painted in 2-part durable urethane and coated with non-slip striping for grip.

Cabinet Accessories

Model #	Description	Approx. Ship Wt.
BR24	Drum Cabinet Ramp	30 lbs.



Cabinet Model # V175
Shown with Ramp Model # BR24
23"H x 24"W x 1"D

Acid & Corrosive Storage

You can keep all acids safe and at hand with SECURALL® Acid/Corrosive Storage Cabinets for both flammable and nonflammable corrosives. Cabinets are finished in corrosive-resistant two-part urethane. Cabinets are equipped with leak tight sump and galvanized steel shelves to contain accidental spills. All models include a polyethylene sheet liner on the sump and 24-gallon models include liner on tray-top. Cabinet by itself is not recommended for the storage of Nitric or Sulfuric Acids unless used in conjunction with PE3045 Polyethylene Cabinet. Large warning label reads: CAUTION CORROSIVES. Cabinets meet OSHA and NFPA Code 30 regulations. Standard color is Blue.



Model #C124



Model #C145

- 24-Gallon Cabinet has a leak-proof tray top, which can completely contain a 5-pint spill.
- 24-Gallon Model also comes with a standard kick recess, measuring 3 1/4 "H by 4"D.

Cabinets For Storing Corrosives/Flammables/Acids

Model #	Test Lab Approv.	Description	# of Shelves	Exterior Dim. (H" x W" x D")	Approx. Ship Wt.	Addnl. Shelves	Addnl. Poly Trays	Approx. Ship Wt.
C124	FM*~	24 Gal. Self-Latch Standard Door	1	36 x 35 x 22	207 lbs.	C1-05	P1	11 lbs.
C224	*~	24 Gal. Self-Close, Self-Latch Sliding Door	1	36 x 35 x 32	212	C1-05	P1	11
C130	FM*~	30 Gal. Self-Latch Standard 2-Door	1	44 x 43 x 18	270	C2-05	P2	10
C230	FM*~	30 Gal. Self-Close, Self-Latch Sliding Door	1	44 x 43 x 18	275	C2-05	P2	10
C330	FM*~	30 Gal. Self-Close, Self-Latch Safe-T-Door	1	46 x 43 x 18	290	C2-05	P2	10
C145	FM*~	45 Gal. Self-Latch Standard 2-Door	2	65 x 43 x 18	363	C2-05	P2	10
C245	FM*~	45 Gal. Self-Close, Self-Latch Sliding Door	2	65 x 43 x 18	368	C2-05	P2	10
C345	FM*~	45 Gal. Self-Close, Self-Latch Safe-T-Door	2	67 x 43 x 18	383	C2-05	P2	10
C160	FM*~	60 Gal. Self-Latch Standard 2-Door	2	65 x 31 x 31	396	C3-05	P3	12
C260	FM*~	60 Gal. Self-Close, Self-Latch Sliding Door	2	65 x 31 x 31	401	C3-05	P3	12
C360	FM*~	60 Gal. Self-Close, Self-Latch Safe-T-Door	2	67 x 31 x 31	418	C3-05	P3	12
PE3045		Polyethylene Cabinet for Harsh Acids/Corrosives	-	18 x 38 x 13	32	-	-	-

Polyethylene Cabinets

Blue Polyethylene Cabinets are designed to fit inside a SECURALL® Acid/Corrosive Safety Cabinet, or may be used as a stand-alone counter top cabinet. Cabinets are constructed of high-density (.187" thick) polyethylene, which allows for the safe storage of acids and corrosives near your work area (including nitric and sulfuric acids). Double-wall recessed doors help to control vapors. Fit two Polyethylene Cabinets in a 30-gallon cabinet or three in a 45-gallon cabinet. Labels read: "ACIDS/CORROSIVES" and display the international symbol for Corrosive Material. Cabinets shipped assembled and ready to use.



Model #PE3045

Polyethylene Cabinet For Harsh Acids/Corrosives

Model #	Exterior Dim. (H" x W" x D")	Approx. Ship Wt.
PE3045	18 x 38 x 13	32 lbs.

Paint & Ink Storage

Safety storage cabinets for 1-gallon paint cans are available in 20, 40, 60 and 120-gallon* capacities and finished in two-part urethane paint. Warning label reads: "FLAMMABLE KEEP FIRE AWAY." Cabinets are perfect for print or autobody repair shops and are available in manual, sliding or self-closing door models. Standard color is Yellow.



Model #P160



Model #P140

Cabinets For Storing Flammable Paints/Inks

Model #	Test Lab Approv.	Description	# of Shelves	Capacity	Exterior Dim. (H" x W" x D")	Approx. Ship Wt.	Addnl. Shelves	Approx. Ship Wt.
P120	FM*~	20 Gal. Self-Latch Standard 2-Door	2	20/1 Gal. Cans	44 x 24 x 18	169 lbs.	S1-05	5 lbs.
P320	FM*~	20 Gal. Self-Close, Self-Latch Safe-T-Door	2	20/1 Gal. Cans	46 x 24 x 18	179	S1-05	5
P140	FM*~	40 Gal. Self-Latch Standard 2-Door	3	40/1 Gal. Cans	44 x 43 x 18	271	S2-05	12
P240	FM*~	40 Gal. Self-Close, Self-Latch Sliding Door	3	40/1 Gal. Cans	44 x 43 x 18	276	S2-05	12
P340	FM*~	40 Gal. Self-Close, Self-Latch Safe-T-Door	3	40/1 Gal. Cans	46 x 43 x 18	291	S2-05	12
P160	FM*~	60 Gal. Self-Latch Standard 2-Door	5	60/1 Gal. Cans	65 x 43 x 18	373	S2-05	12
P260	FM*~	60 Gal. Self-Close, Self-Latch Sliding Door	5	60/1 Gal. Cans	65 x 43 x 18	378	S2-05	12
P360	FM*~	60 Gal. Self-Close, Self-Latch Safe-T-Door	5	60/1 Gal. Cans	67 x 43 x 18	393	S2-05	12
P1120	FM*~	120 Gal. Self-Latch Standard 2-Door	5	120 Gallons	65 x 31 x 31	414	S3-05	17
P2120	FM*~	120 Gal. Self-Close, Self-Latch Sliding Door	5	120 Gallons	65 x 31 x 31	419	S3-05	17
P3120	FM*~	120 Gal. Self-Close, Self-Latch Safe-T-Door	5	120 Gallons	67 x 31 x 31	436	S3-05	17

Spill Containment Cabinet

- All-welded 18-gauge extra strength construction.
- Mobile cabinet features four 4" wheels.
- Flush mounted handle provides easy and fast fingertip operation.
- Cabinets have 3-point button lock self-latching doors for extra safety.
- Custom interiors are available to fit your specific needs.

SECURALL®'s Single Wall Spill Containment Cabinets make controlling unwanted spills easier than ever, because you can keep all of your spill control supplies ready and in one organized location. You can choose from four sizes. Our larger full size cabinets are stationary, and our smaller mobile model allows you to respond to cleanups by wheeling your supplies to the spill area. The wall-mounted cabinet keeps all your spill control supplies available without taking up floor space.

Model #SCC132



Model #SCC172



Model #SCC242

Cabinets For Storing Flammable Paints/Inks

Model #	Description	# of Shelves	Storage Capacity	Dimensions (H" x W" x D")	Approx. Ship Wt.
SCC242	Counter High Mobile Cabinet	2	21 Cubic Ft.	42 x 36 x 24	291 lbs.
SCC172	Full Size Stationary Cabinet	4	27 Cubic Ft.	72 x 36 x 18	264
SCC272	Full Size Stationary Cabinet	4	36 Cubic Ft.	72 x 36 x 24	353
SCC132	Wall-mounted Cabinet	2	6 Cubic Ft.	32 x 26 x 12	115

Hazardous Waste Storage

The Resource Conservation and Recovery Act's (RCRA) 1984 amendments made it mandatory that hazardous waste be collected and disposed of properly. SECURALL® offers the largest capacity drum storage cabinets in the industry. All Hazardous Waste Drum Cabinets are equipped with ball bearing Roller Bottoms for easy loading of heavy drums, and an 18-gauge galvanized steel shelf that holds 5-gallon containers. Standard color is Yellow.



Model #W1045



Model #W2045

Cabinets For Storing Hazardous Waste In Drums

Model #	Test Lab Approv.	Description	# of Shelves	Exterior Dim. (H" x W" x D")	Approx. Ship Wt.	Addtnl. Shelves	Approx. Ship Wt.
W1040	FM*~	60 Gal. Self-Latch Standard 2-Door	1	65 x 31 x 31	382 lbs.	S9-05	7 lbs.
W2040	FM*~	60 Gal. Self-Close, Self-Latch Sliding Door	1	65 x 34 x 34	400	S9-N	10
W3040	FM*~	60 Gal. Self-Close, Self-Latch Safe-T-Door	1	67 x 31 x 31	404	S9-05	7
W1075	FM*~	75 Gal. Self-Latch Standard 2-Door	1	65 x 43 x 31	419	S4-05	21
W2075	FM*~	75 Gal. Self-Close, Self-Latch Sliding Door	1	65 x 43 x 31	424	S4-05	21
W1080	FM*~	120 Gal. Self-Latch Standard 2-Door	1	65 x 56 x 31	581	S5-05	16
W3080	FM*~	120 Gal. Self-Close, Self-Latch Safe-T-Door	1	67 x 56 x 31	610	S5-05	16

Cabinets For Storing Hazardous Waste In Cans

Model #	Test Lab Approv.	Description	# of Shelves	Exterior Dim. (H" x W" x D")	Approx. Ship Wt.	Addtnl. Shelves	Approx. Ship Wt.
W1045	FM*~	45 Gal. Self-Latch Standard 2-Door	2	65 x 43 x 18	337 lbs.	S2-05	12 lbs.
W2045	FM*~	45 Gal. Self-Close, Self-Latch Sliding Door	2	65 x 43 x 18	342	S2-05	12
W3045	FM*~	45 Gal. Self-Close, Self-Latch Safe-T-Door	2	67 x 43 x 18	357	S2-05	12
W1060	FM*~	60 Gal. Self-Latch Standard 2-Door	2	65 x 31 x 31	372	S9-05	7



Cabinet Model # W1080
Shown With Ramp Model # BR24
23"H x 24"W x 1"D

Cabinet Accessories

Model #	Description	Approx.
BR24	Drum Cabinet Ramp	30 lbs.
CA18	Caster Assembly for cabinets 18" deep	30
CA31	Caster Assembly for cabinets 31" deep	36
CA34	Caster Assembly for cabinets 34" deep	36

Pesticide Storage

The health risks of short-term exposure to pesticides and accidental poisoning are real. SECURALL® Pesticide Cabinets provide safe, secure and controlled storage for agri-chemical products. Farms, nurseries, parks and recreation facilities can safely store pesticides and equipment. Pesticide Storage Cabinets help restrict the handling of pesticides to those who have been appropriately trained and authorized per EPA/WPS. You choose the model to segregate and securely store up to 120-gallons of a Class I, Class II or Class III product. Each model is equipped with 18-gauge galvanized steel shelving. Standard color is Ag Green.



Model #AG345

Cabinets For Storing Pesticides

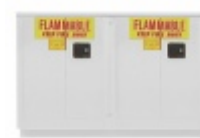
Model #	Test Lab Approv.	Description	# of Shelves	Exterior Dim. (H" x W" x D")	Approx. Ship Wt.	Addtnl. Shelves	Approx. Ship Wt.
AG105	FM*~	12 Gal. Self-Latch Standard Door	1	35 x 24 x 18	138 lbs.	S1-05	5 lbs.
AG305	FM*~	12 Gal. Self-Close, Self-Latch Safe-T-Door	1	37 x 24 x 18	154	S1-05	5
AG130	FM*~	30 Gal. Self-Latch Standard 2-Door	1	44 x 43 x 18	247	S2-05	12
AG330	FM*~	30 Gal. Self-Close, Self-Latch Safe-T-Door	1	46 x 43 x 18	267	S2-05	12
AG145	FM*~	45 Gal. Self-Latch Standard 2-Door	2	65 x 43 x 18	337	S2-05	12
AG345	FM*~	45 Gal. Self-Close, Self-Latch Safe-T-Door	2	67 x 43 x 18	357	S2-05	12
AGV160	FM*~	60 Gal. Self-Latch Standard 2-Door	1	65 x 31 x 31	412	S9-05	16
AGV360	FM*~	60 Gal. Self-Close, Self-Latch Safe-T-Door	1	67 x 31 x 31	434	S9-05	16
AGV1110	FM*~	120 Gal. Self-Latch Standard 2-Door	1	65 x 56 x 31	618	S5-05	17
AGV3110	FM*~	120 Gal. Self-Close, Self-Latch Safe-T-Door	1	67 x 56 x 31	610	S5-05	17

Laboratory Storage

Convenient SECURALL® Laboratory Cabinets help avoid the fire and explosion hazards of unprotected flammable liquids and chemicals. These cabinets are specifically designed to fit under most counters, allowing more counter-top workspace. Each cabinet is equipped with 18-gauge galvanized steel shelving and painted in two-part urethane for wear resistance and a durable finish. You choose from 24, 36 or 44-gallon capacity, or custom build to suit your needs. All models have non-sparking latches that are available in Self-Latching Manual Doors or Self-Closing, Self-Latching Sliding Doors. Standard color is Yellow.



Model #L236



Model #L244

Cabinets For Storing Flammables

Model #	Test Lab Approv.	Description	# of Shelves	Exterior Dim. (H" x W" x D")	Approx. Ship Wt.	Addtnl. Shelves	Approx. Ship Wt.
L124	FM*~	24 Gal. Self-Latch Standard 2-Door	1	35 9/16 x 35 x 22	199 lbs.	LS5-05	12 lbs.
L224	*~	24 Gal. Self-Close, Self-Latch Sliding Door	1	35 5/8 x 35 x 22	204	LS5-05	12
L136	FM*~	36 Gal. Self-Latch Standard 2-Door	1	35 9/16 x 47 x 22	252	LS10-05	16
L236	*~	36 Gal. Self-Close, Self-Latch Sliding Door	1	35 5/8 x 47 x 22	257	LS10-05	16
L144	FM*~	44 Gal. Self-Latch Standard 4-Door	1	35 9/16 x 59 x 22	284	LS15-05	22
L244	*~	44 Gal. Self-Close, Self-Latch Sliding Door	1	35 5/8 x 59 x 22	289	LS15-05	22

Wall Mount & Stackable Storage

Offering maximum storage in a compact size, these cabinets will hold up to 24-gallons of flammable liquids without taking up valuable floor space. Each cabinet is furnished with brackets for easy wall mounting or can be placed on a bench top and are equipped with, up to five, adjustable 18-gauge galvanized steel shelves that can be positioned to meet your specific needs. Standard color is Yellow.

Cabinets 18"D are also designed to stack on top of standard 30-gallon Cabinets or on top of each other. Cabinets can be secured using Stacking Bracket (included). They are ideal for segregating flammables and/or increasing the capacity of your current cabinet. Standard color is Yellow.



Model #WMA118



Model #WMA124

Cabinets For Storing Flammables

Model #	Test Lab Approv.	Description	# of Shelves	Exterior Dim. (H" x W" x D")	Approx. Ship Wt.	Addtnl. Shelves	Approx. Ship Wt.
WMA112	FM*~	12 Gal. Self-Latch Standard 2-Door	1	18 x 43 x 18	163 lbs.	S2-05	12 lbs.
WMA312	FM*~	12 Gal. Self-Close, Self-Latch Safe-T-Door	1	20 x 43 x 18	183	S2-05	12
WMA118	FM*~	18 Gal. Self-Latch Standard 2-Door	1	24 x 43 x 18	190	S2-05	12
WMA318	FM*~	18 Gal. Self-Close, Self-Latch Safe-T-Door	1	26 x 43 x 18	210	S2-05	12
WMA124	FM*~	24 Gal. Self-Latch Standard 2-Door	5	44 x 43 x 12	227	WMS5-05	8
WMA324	FM*~	24 Gal. Self-Close, Self-Latch Safe-T-Door	5	46 x 43 x 12	235	WMS5-05	8

Cabinet Spare Parts & Accessories

Model #	Description	Approx. Ship Wt.	Model #	Description	Approx. Ship Wt.
500	Wall Mount Bracket	12 lbs.	550	Stacking Bracket	6 lbs.

Aluminum LP/Oxygen Gas Cylinder Storage

Non-sparking Aluminum Gas Cylinder Cabinets provide significant advantages over conventional painted steel models. Designed for outdoor storage using .125" thick aluminum construction, these heavy gauge cabinets will resist weathering and won't corrode or discolor. All-welded 12-gauge aluminum construction features expanded metal sides and doors. Welded padlock hasp is standard for controlled access.

Models ship fully assembled and ready to use. Labels ship unattached to storage unit for individual placement depending on product application .



Model #LP12S



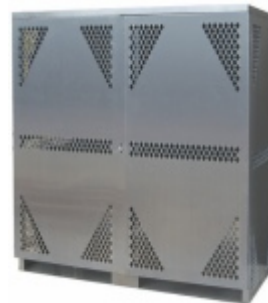
Model #LP4S

Cabinets For Storing LP & Oxygen Gas Cylinders

Model #	Test Lab Approv.	Description	# of Racks	Capacity	Exterior Dim. (H" x W" x D")	Approx. Ship Wt.
LP2S	*	2 Cyl. Vertical Standard Door	-	(2) 20 or 33 lb. cylinders	33 x 31 x 16	54 lbs.
LP4S	*	4 Cyl. Horizontal Standard Door	2	(4) 20 or 33 lb. cylinders	33 x 30 x 32	91
LP6S	*	6 Cyl. Horizontal Standard Door	2	(6) 20 or 33 lb. cylinders	33 x 43 x 32	112
LP8S	*	8 Cyl. Horizontal Standard Door	4	(8) 20 or 33 lb. cylinders	65 x 30 x 32	134
LP12S	*	12 Cyl. Horizontal Standard Door	4	(12) 20 or 33 lb. cylinders	65 x 43 x 32	169
LP16S	*	16 Cyl. Horizontal Standard 2-Door	4	(16) 20 or 33 lb. cylinders	65 x 60 x 32	234
OG10S	*	5-10 Cyl. Vertical Standard Door	-	Oxygen, Gas Cylinders	65 x 30 x 32	115
OG20S	*	10-20 Cyl. Vertical Standard 2-Door	-	Oxygen, Gas Cylinders	65 x 60 x 32	194

Aluminum Vertical LP Storage

All LP units are available in Vertical Storage Models at no additional charge. Simply add "VERTICAL" to your PO. Vertical LP Storage Units comply with CSAB 149.2, Canadian Standard for Liquid Propane Storage. SECURALL® also offers a comprehensive LP/OG Cylinder Storage Unit that allows for the storage of both horizontal AND vertical cylinders in a combination unit. Combo Unit stores up to 8 cylinders on reinforced 12-gauge aluminum racks or shelves and up to 10 cylinders vertically. They are made of the same high grade .125" thick aluminum and all-welded construction.



Model #LPOGS



Model #LP8S-Vertical

Cabinets For Storing LP & Oxygen Gas Cylinders

Model #	Test Lab Approv.	Description	# of Racks	Capacity	Exterior Dim. (H" x W" x D")	Approx. Ship Wt.
LP4S-Vertical	*	4 Cyl. Horizontal Standard Door	1	(4) 20 or 33 lb. cylinders	33 x 30 x 32	86 lbs.
LP6S-Vertical	*	6 Cyl. Horizontal Standard Door	1	(6) 20 or 33 lb. cylinders	33 x 43 x 32	104
LP8S-Vertical	*	8 Cyl. Horizontal Standard Door	2	(8) 20 or 33 lb. cylinders	65 x 30 x 32	119
LP12S-Vertical	*	12 Cyl. Horizontal Standard Door	2	(12) 20 or 33 lb. cylinders	65 x 43 x 32	145
LP16S-Vertical	*	16 Cyl. Horizontal Standard 2-Door	2	(16) 20 or 33 lb. cylinders	65 x 60 x 32	204
LPOGS		8 Cyl. Horizontal Storage, 10 Cyl. Vertical Storage	2	(8) 20 or 33 lb. cylinders & Oxygen, Gas cylinders	65 x 60 x 32	200

Medical Gas Storage Cabinets

You can store your portable medical gas cylinders safely and in compliance with OSHA requirements. Securall® Oxygen Cylinder Storage Cabinets are designed to meet storage requirements for portable medical oxygen systems as set forth in:

- NFPA Code 99 - Health Care Facilities - 2018 Edition
- NFPA Code 101 - Life Safety - 2018 Edition
- NFPA Code 30 - Flammable and Combustible Liquids - 2018 Edition OSHA Regulations

These lockable storage cabinets limit access to authorized personnel, protecting cylinders from theft, damage or tampering. The heavy-gauge, double-walled construction shields your cylinders from heat, sparks and flame, while separating them from flammable and combustible materials. Designed for D- and E-size cylinders up to 33-3/4" long x 4-1/4" diameter, and H-size cylinders up to 60" long x 9-1/4" diameter. Fire lining available. Standard color is MG Green



MG Digital Pkg



Model #MG321



Model #MG309

Cabinet Features

- Flush Mounted Handle with Optional Digital Combination Lock
- 3-Point, Button Latch Closure
- Non-Sparking Dividers Hold Cylinders Upright

Cabinets For Storing Oxygen Cylinders

Model #	Door Style	Cylinder Size	Cylinder Capacity	Exterior Dim. (H" x W" x D")	Approx. Ship Wt.
MG102	Manual	D, E	1-2	44 x 14 x 9	97 lbs.
MG102FL	Manual	D, E	1-2	44 x 14 x 9	112
MG104	Manual	D, E	2-4	44 x 14 x 13 5/8	115
MG104FL	Manual	D, E	2-4	44 x 14 x 13 5/8	135
MG304	Safe-T-Door	D, E	2-4	46 x 14 x 13 5/8	125
MG304FL	Safe-T-Door	D, E	2-4	46 x 14 x 13 5/8	145
MG109	Manual	D, E	9-12	44 x 23 x 18	170
MG309	Manual	D, E	9-12	44 x 23 x 18	199
MG109FL	Safe-T-Door	D, E	9-12	46 x 23 x 18	180
MG309FL	Safe-T-Door	D, E	9-12	46 x 23 x 18	209
MG121	Manual	D, E	21-24	44 x 43 x 18	265
MG121FL	Manual	D, E	21-24	44 x 43 x 18	308
MG321	Safe-T-Door	D, E	21-24	46 x 43 x 18	280
MG321FL	Safe-T-Door	D, E	21-24	46 x 43 x 18	323
MG106H	Manual	H	6-9	65 x 34 x 34	372
MG106HFL	Manual	H	6-9	65 x 34 x 34	436
MG306H	Safe-T-Door	H	6-9	67 x 34 x 34	394
MG306HFL	Safe-T-Door	H	6-9	67 x 34 x 34	458
MG109H	Manual	H	9-12	65 x 43 x 34	443
MG109HFL	Manual	H	9-12	65 x 43 x 34	520
MG309H	Safe-T-Door	H	9-12	67 x 43 x 34	550
MG309HFL	Safe-T-Door	H	9-12	67 x 43 x 34	550
CA18-MGREEN	Caster for 18"D Cabinet		2 Swivel, 2 Locking rigid casters		30 lbs.
CA34-MGREEN	Caster for 34"D Cabinet		2 Swivel, 2 Locking rigid casters		35
MG Digital Pkg	Digital Keypad Lock		(Added upcharge)		5

FL = Fire Lined with 3/4" Gypsum Panel Drywall

Outdoor Weatherproof Flammable Storage

SECURALL® Weatherproof cabinets offer the same dependable storage for flammables and combustibles as our standard safety cabinet line with added protection from the elements. Double-wall cabinets are all-welded with 18-gauge construction using galvanized steel and painted with a weather-resistant, urethane finish that is also resistant to ultra-violet rays. All cabinets feature a sloped roof with a 2 3/4" overhang as well as interior and exterior astragals that prevent rain penetration, while the flush-mounted stainless steel locking handle resists corrosion. You can easily move these cabinets to the appropriate work location using built-in heavy gauge fork lift channels and secure them with fully-welded 7-gauge Bolt-Down Brackets, which have 1/2" diameter opening. Cabinets are available in 30, 45, 60 and 90-gallon capacities with manual and self-closing door styles. Self-closing Safe-T-Doors have fusible links that melt at 165°F allowing the doors to automatically close and latch. Standard color is Yellow. Cabinets meet NFPA 40 CFR 264, 265, NFPA Code 30 & OSHA 1910 requirements.



Model #A160WP1



Model #A130WP1

Cabinet Features

- Sloped roof with 2" overhang
- Stainless steel handle with padlock hasp
- Fork lift channels w/ bolt-down bracket
- 3-point, non-sparking, self-latching closure
- Astragals on inside and outside of doors

Cabinets For Storing Flammables Outdoors

Model #	Test Lab Approv.	Description	# of Shelves	Exterior Dim. (H" x W" x D")	Approx. Ship Wt.	Addtl. Shelves	Approx. Ship Wt.
A130WP1	FM*~	30 Gal. Weatherproof, Manual 2-Door	1	48 x 43 x 18	282 lbs.	S2-05	12 lbs.
A330WP1	FM*~	30 Gal. Weatherproof, Self-Close, Self-Latch Safe-T-Door	1	50 x 43 x 18	302	S2-05	12
A145WP1	FM*~	45 Gal. Weatherproof, Manual 2-Door	2	69 x 43 x 18	372	S2-05	12
A345WP1	FM*~	45 Gal. Weatherproof, Self-Close, Self-Latch Safe-T-Door	2	71 x 43 x 18	392	S2-05	12
A160WP1	FM*~	60 Gal. Weatherproof, Manual 2-Door	2	69 x 31 x 31	423	S3-05	17
A360WP1	FM*~	60 Gal. Weatherproof, Self-Close, Self-Latch Safe-T-Door	2	71 x 31 x 31	445	S3-05	17
A190WP1	FM*~	90 Gal. Weatherproof, Manual 2-Door	2	69 x 43 x 31	503	S4-05	21
A390WP1	FM*~	90 Gal. Weatherproof Self-Close, Self-Latch Safe-T-Door	2	71 x 43 x 31	532	S4-05	21
881		High Security Handle with Hasp			2		

Industrial / Commercial Storage

You can easily organize, store and protect your valuable tools and materials with SECURALL® Industrial/Commercial storage cabinets.

- 18-gauge all-welded extra strength construction throughout.
18-gauge steel double wall doors.
- Each 18-gauge galvanized steel shelf can hold up to 500 lbs and is easily adjustable on 5" centers.
- 3-point self-latching doors have double wall construction.
- Full-length piano hinges and a lockable flush mounted door handle for obstruction free, fingertip operation.
- Shipped fully assembled and ready to use. — Standard colors are Beige or Gray (Additional colors available)



Model #SS184



Model #SS172

Cabinets For Storing Industrial/Commercial Supplies

Model #	Description	# of Shelves	Exterior Dim. (H" x W" x D")	Approx. Ship Wt.	Addnl. Shelves	Approx. Ship Wt.
SS142	Self-Latch Standard 2-Door	2	42 x 36 x 18	151 lbs.	SS-1-05	13 lbs.
SS172	Self-Latch Standard 2-Door	4	72 x 36 x 18	264	SS-1-05	13
SS184	Self-Latch Standard 2-Door	4	84 x 36 x 18	300	SS-1-05	13
SS242	Self-Latch Standard 2-Door	2	42 x 36 x 24	200	SS-2-05	17
SS272	Self-Latch Standard 2-Door	4	72 x 36 x 24	353	SS-2-05	17
SS284	Self-Latch Standard 2-Door	4	84 x 36 x 24	401	SS-2-05	17
SW242	Self-Latch Standard 2-Door/Counter High Mobile	2	47 x 36 x 24	200	SS-2-05	17

Cabinet Features

- Flush Mounted Handle with Optional Digital Combination Lock
- 3-Point, Button Latch Closure

Mobile Storage Cabinet

Mobile Storage Cabinet Model comes equipped with two rigid and two swivel 4" locking casters (factory installed) and a sturdy push handle for easy mobility.



Model #SW242

Cabinets For Storing Industrial/Commercial Supplies

Model #	Description	# of Shelves	Exterior Dim. (H" x W" x D")	Approx. Ship Wt.	Addnl. Shelves	Approx. Ship Wt.
SW242	Self-Latch Standard 2-Door/Counter High Mobile	2	47 x 36 x 24	200 lbs.	SS-2-05	17 lbs.

Stainless Steel Storage

Stainless Steel Safety Cabinets For Flammable and Combustible Liquids

All The same features as a standard safety cabinet in Stainless Steel.

- Perfect for Controlled Environments and Clean room applications such as Hospitals and Laboratories.
Durable, 18-gauge stainless steel cabinets offer Extra Strength From Superior Design & Workmanship.
- All-welded cabinets feature double-wall construction with 1 ½" insulating airspace.
- 18-gauge stainless steel shelves are adjustable.
- Stainless steel vents feature a 2" opening in both interior and exterior walls.—2" leak-proof sill contains spills.
- Flush-mounted stainless steel locking door handle eliminates projecting obstacles.
- Cabinets come equipped with four adjustable, stainless steel legs and heavy gauge, stainless steel piano hinges.



Model #A130-SS



Model #A331-SS

Cabinet Features

- Stainless Steel flush-mount Paddle Handle
- 3-Point, Self-Latching Spring-Operated Button Latches

All cabinets meet OSHA and NFPA Code 30 regulations. All Cabinet Models Listed are FM Approved.



Stainless Steel Cabinets For Storing Flammables

Model #	Test Lab Approv.	Description	# of Shelves	Exterior Dim. (H" x W" x D")	Approx. Ship Wt.	Addtnl. Shelves	Approx. Ship Wt.
A105-SS	FM*~	12 Gal. Self-Latch Standard Door	1	35 x 24 x 18	185 lbs.	S1-SS-05	5 lbs.
A305-SS	FM*~	12 Gal. Self-Close, Self-Latch Safe-T-Door	1	37 x 24 x 18	195	S1-SS-05	5
A110-SS	FM*~	16 Gal. Self-Latch Standard Door	1	44 x 24 x 18	217	S1-SS-05	5
A310-SS	FM*~	16 Gal. Self-Close, Self-Latch Safe-T-Door	1	46 x 24 x 18	227	S1-SS-05	5
A131-SS	FM*~	30 Gal. Self-Latch Standard Door	1	35 x 36 x 24	291	S15-SS-05	13
A331-SS	FM*~	30 Gal. Self-Close, Self-Latch Safe-T-Door	1	37 x 36 x 24	306	S15-SS-05	13
A130-SS	FM*~	30 Gal. Self-Latch Standard Door	1	44 x 43 x 18	325	S2-SS-05	12
A330-SS	FM*~	30 Gal. Self-Close, Self-Latch Safe-T-Door	1	46 x 43 x 18	345	S2-SS-05	12
A145-SS	FM*~	45 Gal. Self-Latch Standard Door	2	65 x 43 x 18	445	S2-SS-05	12
A345-SS	FM*~	45 Gal. Self-Close, Self-Latch Safe-T-Door	2	67 x 43 x 18	465	S2-SS-05	12
A160-SS	FM*~	60 Gal. Self-Latch Standard Door	2	65 x 31 x 31	533	S3-SS-05	17
A360-SS	FM*~	60 Gal. Self-Close, Self-Latch Safe-T-Door	2	67 x 31 x 31	555	S3-SS-05	17

* Complies with OSHA Regulations

FM Factory Mutual Tested and Approved

- Designed in Accordance with Specifications set forth by the National Fire Protection Association

Customize To Suit Your Needs

Let us help you design an all steel cabinet to meet your specific needs. Cabinets can be constructed to comply with both NFPA and current OSHA regulations. Cabinets can be made in almost any size or shape. Example: To fit under hoods, on top of counters, free standing or wall mounted.

Dual Access Cabinet



Custom Storage

Choose From Options Such As:

- ✓ Cabinet Color
- ✓ Dimensions
- ✓ Sump Capacity
- ✓ Sump Liners
- ✓ Handle Type
- ✓ Number of Doors
- ✓ Door Closing Type
- ✓ Dual Access
- ✓ Number of Shelves
- ✓ Shelf Capacity
- ✓ Shelf Lining
- ✓ Poly Trays
- ✓ Labels
- ✓ Tray Top
- ✓ Wall Mount
- ✓ Anchoring Brackets
- ✓ Kick Recess
- ✓ Leveling Legs
- ✓ Forklift Channels
- ✓ Casters
- ✓ Stainless Steel
- ✓ High Security Lock
- ✓ Ventilation
- ✓ Ground
- ✓ Weatherproof Package

Speak to one of our Technical Sales Representatives for storage requirements and approved capacities.

Call (888) 326-7890 or visit us online at securallproducts.com and fill out a custom cabinet quote form.

Hazmat Storage Buildings

Buildings are specifically designed for outdoor storage and dispensing from 55-gallon drums containing flammable or combustible liquids. Outer wall is constructed of welded 16 or 12-gauge steel. Inner wall is constructed of 20-gauge steel. Outdoor storage buildings are engineered with 3" airspace throughout and come standard with a commercial grade lockset handle.

All models are designed in accordance with the standards set forth by NFPA Code 30 and comply with OSHA and EPA regulations. All models are FM approved for the storing and dispensing of flammable and combustible liquids. Standard color is Gray.



Lockers/Buildings For Storing 55-Gallon Drums

Model #	Test Lab Approv.	Sump Capacity to Hold	Sump Capacity	Exterior Dim. (H x W x D)	Approx. Ship Wt.	2-Hour Fire Rating Upgrade		4-Hour Fire Rating Upgrade	
						Model #	Approx. Ship Wt.	Model #	Approx. Ship Wt.
B200	FM*~	2 55-Gal. Drums	55 Gal.	6'11" x 5' x 3'6"	1,281 lbs.	B200FR2	2,579 lbs.	B200FR4	3,003 lbs.
B400	FM*~	4 55-Gal. Drums	68	6'11" x 5' x 5'	1,748	B400FR2	3,111	B400FR4	3,626
B600	FM*~	6 55-Gal. Drums	102	8'3" x 7' x 5'	2,061	B600FR2	4,300	B600FR4	5,034
B900	FM*~	9 55-Gal. Drums	154	8'3" x 7' x 7'	2,567	B900FR2	5,279	B900FR4	6,171
B1200	FM*~	12 55-Gal. Drums	206	8'3" x 7' x 9'	3,200	B1200FR2	6,259	B1200FR4	7,308
B1600	FM*~	16 55-Gal. Drums	272	8'3" x 10' x 8'	5,515	B1600FR2	8,208	B1600FR4	9,384
B2400	FM*~	24 55-Gal. Drums	393	8'3" x 14' x 8'	6,944	B2400FR2	10,544	B2400FR4	12,051
B3200	FM*~	32 55-Gal. Drums	514	8'3" x 28' x 8'	8,652	B3200FR2	13,008	B3200FR4	14,846
B3800	FM*~	38 55-Gal. Drums	636	8'3" x 22' x 8'	9,309	B3800FR2	15,399	B3800FR4	17,567
B4800	FM*~	48 55-Gal. Drums	757	8'3" x 26' x 8'	9,963	B4800FR2	17,786	B4800FR4	20,285
B6400	FM*~	64 55-Gal. Drums	1,000	8'3" x 34' x 8'	12,851	B6400FR2	22,467	B6400FR4	25,628
B8000	FM*~	80 55-Gal. Drums	1,243	8'3" x 42' x 8'	15,369	B8000FR2	27,106	B8000FR4	30,926

Securall® Fire-Rated Storage Buildings carry the Factory Mutual System Approval label and have an FM Approved Fire Rated Wall & Roof Design. Wall and Roof were Tested at Intertek Testing Laboratories. Securall® Fire-Rated Storage Buildings constructed based upon UL Fire Resistance Ratings classification criteria. Standard models are available with a 2-hour and 4-hour fire ratings upgrade. Wall ratings are either 2 or 4 hour fire rated. Roof ratings are either 2 or 3 hour fire rated (Check with your local authority having jurisdiction for correct wall/roof rating needed.)



Model #B200



Model #B1600

Industry's 1st & Only FM Approved Fire Rated Wall & Roof Design Tested at Intertek Testing Labs



Explosion Relief Panel

Model #	Description
B200X	1 - 24" X 40"
B400X	1 - 24" X 40"
B600X	1 - 48" X 40"
B900X	1 - 48" X 40"
B1200X	1 - 48" X 40"
B1600X	1 - 48" X 48"
B2400X	2 - 48" X 40"
B3200X	2 - 48" X 40"
B3800X	2 - 48" X 48"
B4800X	2 - 48" X 48"
B6400X	3 - 48" X 40"
B8000X	4 - 48" X 40"

Custom & Special Options

- Fire Suppression System
- Interior Shelving
- Explosion Proof Lighting
- Explosion Proof Heater
- Explosion Proof Air Conditioner

* Complies with OSHA Regulations FM Factory Mutual Tested and Approved
 - Designed in Accordance with Specifications set forth by the National Fire Protection Association

Chemical Storage Buildings

All Chemical Storage Buildings are designed to help you comply with safety rules when mixing and handling pesticides. Securall buildings help reduce the risk of poisoning and injuries among pesticide handlers and agricultural employees and will also help you protect against chemical spills, children and animal poisonings, theft, fire and unauthorized personnel.

Shelving & Lighting - Securall Agri-Chemical Storage lockers/buildings comes with 3 tiers of shelving. Interior & Exterior lighting, a receptacle and load center.



Lockers/Buildings For Storing Chemicals

Model #	Test Lab Approv.	Capacity	Sump Capacity	Exterior Dim. (H x W x D)	Approx. Ship Wt.	2-Hour Fire Rating Upgrade		4-Hour Fire Rating Upgrade	
						Model #	Approx. Ship Wt.	Model #	Approx. Ship Wt.
AG200	FM*~	68.4 Cubic Feet	55 Gal.	6'11" x 5' x 3'6"	1,431 lbs.	AG200FR2	2,729 lbs.	AG200FR4	3,153 lbs.
AG400	FM*~	145.1 Cubic Feet	68	6'11" x 5' x 5'	1,898	AG400FR2	3,261	AG400FR4	3,776
AG600	FM*~	211.4 Cubic Feet	102	8'3" x 7' x 5'	2,236	AG600FR2	4,475	AG600FR4	5,209
AG900	FM*~	308.1 Cubic Feet	154	8'3" x 7' x 7'	2,742	AG900FR2	5,454	AG900FR4	6,346
AG1200	FM*~	404.7 Cubic Feet	206	8'3" x 7' x 9'	3,375	AG1200FR2	6,434	AG1200FR4	7,483
AG1600	FM*~	524.1 Cubic Feet	272	8'3" x 10' x 8'	5,715	AG1600FR2	8,408	AG1600FR4	9,584
AG2400	FM*~	747.7 Cubic Feet	393	8'3" x 14' x 8'	7,194	AG2400FR2	10,794	AG2400FR4	12,301
AG3200	FM*~	971.3 Cubic Feet	514	8'3" x 28' x 8'	8,852	AG3200FR2	13,208	AG3200FR4	15,046
AG3800	FM*~	1,169 Cubic Feet	636	8'3" x 22' x 8'	9,520	AG3800FR2	15,610	AG3800FR4	17,778
AG4800	FM*~	1,418.5 Cubic Feet	757	8'3" x 26' x 8'	10,188	AG4800FR2	18,011	AG4800FR4	20,510
AG6400	FM*~	1,865.7 Cubic Feet	1,000	8'3" x 34' x 8'	13,076	AG6400FR2	22,692	AG6400FR4	25,853
AG8000	FM*~	2,313 Cubic Feet	1,243	8'3" x 42' x 8'	15,619	AG8000FR2	27,356	AG8000FR4	31,176

Securall® Fire-Rated Storage Buildings carry the Factory Mutual System Approval label and have an FM approved Fire Rated Wall & Roof Design. Wall and roof were tested at Intertek Testing Laboratories. Securall® Fire-Rated Storage Buildings are constructed based upon UL Fire Resistance Ratings classification criteria. Agri-Chemical Lockers/Buildings are available with a 2-hour or 4-hour fire ratings upgrade. Wall ratings are 2 or 4 hour fire rated. Roof ratings are 2 or 3 hour fire rated. Fire-rating is dependant on the proximity of the location of your outdoor storage Locker/Building to any adjacent building or property line. (Check with your local authority having jurisdiction for correct wall/roof rating needed.)



Model #AG200



Model #AG2400

Industry's 1st & Only FM Approved Fire Rated Wall & Roof Design Tested at Intertek Testing Labs



Building Standard Features

- All Agri-Chemical storage buildings (Except AG200) come with 3 tiers of shelving on 3 walls, Interior and exterior lighting, a receptacle and load center

Tornado Shelters & Safe Rooms

Our fully welded, heavy duty storm shelters not only offer secure protection, but also the Peace of Mind that comes with knowing that shelter is immediately accessible whenever you need it.

- Securall Storm Shelters & Safe Rooms are built in accordance with specifications set forth by FEMA, the National Storm Shelter Association (NSSA), and the International Code Council (ICC).
- Our tornado shelters comply with the recommendations established in the documents: FEMA 320 - Taking Shelter from the Storm (written in conjunction with Texas Tech's Wind Engineering Research Center) and ICC-500.
- Securall Tornado Safe's FEMA 320/361/ICC-500 Proprietary Wall Assembly & FEMA 320/ICC-500 door assembly was tested and successfully passed missile impact resistance tests at Texas Tech University's Wind Science and Engineering Research Center.



Tornado Shelters

Model #	Description	Exterior Dim. (H" x W" x D")	Approx. Ship Wt.
TS10	Area: 74 Sq Ft; 1 to 14 People Capacity	7'3" x 10' x 8'	3,243 lbs.
TS14	Area: 105 Sq Ft; 1 to 21 People Capacity	7'3" x 14' x 8'	3,997
TS18	Area: 135 Sq Ft; 1 to 27 People Capacity	7'3" x 18' x 8'	4,769
TS26	Area: 197 Sq Ft; 1 to 39 People Capacity	7'3" x 26' x 8'	6,278
TS34	Area: 258 Sq Ft; 1 to 51 People Capacity	7'3" x 34' x 8'	7,776
TS42	Area: 319 Sq Ft; 1 to 63 People Capacity	7'3" x 42' x 8'	9,295



Model #TS26



Model #TR6

Tornado Safe Rooms

Model #	Description	Exterior Dim. (H" x W" x D")	Approx. Ship Wt.
TR4	26 Bolt Down Locations; Capacity 1 to 3 People Capacity	7'3" x 4' x 4'	866 lbs.
TR6	34 Bolt Down Locations; Capacity 1 to 4 People Capacity	7'3" x 6' x 4'	1,113
TR8	42 Bolt Down Locations; Capacity 1 to 6 People Capacity	7'3" x 8' x 4'	1,316
TR10	50 Bolt Down Locations; Capacity 1 to 8 People Capacity	7'3" x 10' x 4'	1,665

Explosive Storage Magazines

Securall Explosive Storage Magazines provide safe and compliant storage options for both High and Low Explosives. We manufacture Type 2, Type 3 and Type 4 Magazines for indoor or outdoor uses.

Our Type 2 Outdoor Magazines' Bullet-Resistant design meets or exceeds the ATF specs at CFR 555.11 (pg. 75 ATF Ruling 76-18 (b)). All Securall Magazines are designed to be Weather, Fire and Theft Resistant. Additionally, Securall is the only Magazine Manufacturer currently offering an optional upgrade of 2 hour Fire-Rated Walls. Also, our proprietary wall design has been tested and rated to withstand F-5 Tornado winds and associated impacts (Texas Tech University Wind Science and Engineering Research Center).

Type 3 Magazines, or Day Boxes as they are commonly called, are designed to secure smaller amounts of explosives for use in the field. Day Boxes are easily portable and can serve to safely transport and store explosives to and from the work site. These can be mounted to a vehicle or trailer if desired, or left free standing to be carried. Units are manufactured with a 12 Gauge, single wall construction lined with a non-sparking material.

Type 4 Magazines are designed to store Low Explosives and can be placed indoors or outdoors. Our Type 4 magazines are made of steel and are all weather, theft and fire resistant. These units are constructed of a 12 gauge, formed, outer wall and are lined on the interior with ½" plywood sheets. 2 hooded hasps for padlocks are placed on the door to prevent tampering and forced entry.

Explosive Storage Magazines

Type2 Indoor Magazine		Type2 Outdoor Bullet Resistant		Type2 Indoor Fire Rated		Type2 Fire Rated Outdoor Bullet Resistant		
Model #	Approx. Ship Wt.	Model #	Approx. Ship Wt.	Model #	Approx. Ship Wt.	Model #	Approx. Ship Wt.	Exterior Dim. (H" x W" x D")
M100T2I	584 lbs.	M100T2O	2,631 lbs.	-	-	-	-	36" x 36" x 30"
M150T2I	925	M150T2O	2,845	-	-	-	-	60" x 42" x 36"
M180T2I	2,381	M180T2O	5,137	-	-	-	-	72" x 60" x 42"
M200T2I	2,564	M200T2O	5,609	M200T2I-FR2	4,761 lbs.	M200T2O-FR2	7,806 lbs.	6'11" x 5' x 3'6"
M400T2I	2,827	M400T2O	6,355	M400T2I-FR2	5,436	M400T2O-FR2	8,956	6'11" x 5' x 5'
M600T2I	3,623	M600T2O	8,246	M600T2I-FR2I	7,354	M600T2O-FR2	11,978	8'4" x 7' x 5'
M900T2I	4,067	M900T2O	9,477	M900T2I-FR2	8,477	M900T2O-FR2	13,877	8'4" x 7' x 7'
M1200T2I	4,511	M1200T2O	10,707	M1200T2I-FR2	9,600	M1200T2O-FR2	15,796	8'4" x 7' x 9'
M1600T2I	5,142	M1600T2O	12,072	M1600T2I-FR2	10,935	M1600T2O-FR2	17,865	8'4" x 10' x 8'
M2400T2I	6,310	M2400T2O	14,713	M2400T2I-FR2	13,494	M2400T2O-FR2	21,897	8'4" x 14' x 8'
M3200T2I	7,447	M3200T2O	17,353	M3200T2I-FR2	16,022	M3200T2O-FR2	25,929	8'4" x 18' x 8'
M3800T2I	8,615	M3800T2O	19,994	M3800T2I-FR2	18,582	M3800T2O-FR2	29,961	8'4" x 22' x 8'
M4800T2I	9,783	M4800T2O	22,634	M4800T2I-FR2	21,142	M4800T2O-FR2	33,992	8'4" x 26' x 8'
M6400T2I	12,057	M6400T2O	27,915	M6400T2I-FR2	26,197	M6400T2O-FR2	42,056	8'4" x 34' x 8'
M8000T2I	14,330	M8000T2O	33,169	M8000T2I-FR2	31,253	M8000T2O-FR2	50,119	8'4" x 42' x 8'



Model #M4800



Model #M150



Model #M900

Battery Storage Buildings

Lithium-ion battery fires are happening more often. When they occur, they are not a slow burn or a small flame; the battery can explode, producing a tremendous volume of fire almost instantly. These fires are very difficult to extinguish and are therefore particularly dangerous. Securall offers a comprehensive solution for designing storage lockers or buildings specifically tailored to the unique requirements of storing batteries.

Lithium-ion batteries (Li-ion batteries) are a type of rechargeable battery that has become widely popular for various electronic devices and electric vehicles. They are known for their high energy density, lightweight design, and relatively low self-discharge rate, making them a preferred choice in many applications.

Securall's offerings address various aspects of safety, environmental control, and structural integrity, which are all essential considerations when storing batteries. This is particularly important given the specific considerations and potential safety concerns associated with battery storage.



Key Features & Options

✓ Air Conditioning & Heating

Controlling the temperature is crucial for battery storage, and having options for both air conditioning and heating allows for maintaining an optimal storage environment.

✓ Fire Suppression

Fire suppression systems are critical for safety, especially when dealing with battery storage. Quick response systems can help contain fires before they escalate.

✓ Sump Liners

Sump liners can be important for containing any potential leaks or spills, providing an added layer of protection and making it easier to manage and clean up in the event of a spill.

✓ Fiberglass Floor Grating

Fiberglass floor grating can be a durable and corrosion-resistant choice, providing structural support while allowing for airflow and drainage.

✓ Fire Rating

A fire-rated design of up to four hours indicates a high level of fire resistance, which is crucial for containing and preventing the spread of fire in the event of an incident.

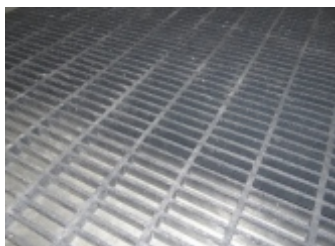


Custom Options Are Available, Please Ask Sales Associate: (888) 326-7890

If you have specific needs or requirements for battery storage, it's recommended to work closely with professionals or experts from Securall to ensure that the design meets your specific use case and complies with relevant safety standards and regulations.



Explosion Proof Heater & Air Conditioner



Fiberglass Floor Grating



Work Bench



Lighting & Electrical

Custom Buildings

Modular Storage Buildings

Modular Buildings are the perfect solution if there is a need for a storage unit that exceeds our hazmat models in size. Modular buildings are built to the same safety standards as our standard hazmat building models and can be built with 2 & 4 hr fire rating configuration.



3-Piece Building



2-Piece Building

Hazmat Buildings with Rooms & Separation Wall

Buildings can be designed with a separation wall allowing you to store incompatible materials. Safety cabinets can also be installed inside the building to separate the different materials. Contact the proper authority having jurisdiction, usually the local Fire Marshal, to determine the appropriate solution for your situation.



2-Tier/Stackable Drum Storage

Stackable Drum Storage option is suitable for increased storage capacity. Top rack can be accessible with forklift for easy relocation of drums. Spill Containment Sumps are sized to comply with current OSHA and EPA requirements.



Code Compliance

Flammable Storage Units are to be Used for the Storage Of:

OSHA 1910

106.8. Flammable liquid means any liquid having a flash point below 100°F (37.8°C) or higher, the total of which make up 99 percent or more of the total volume of the mixture. Flammable liquids shall be known as Class I liquids. Class I liquids are divided into three classes as follows:

- Class IA shall include liquids having flash points below 73°F (22.8°C) and having a boiling point below 100°F (37.8°C).
- Class IB shall include liquids having flash points below 73°F (22.8°C) and having a boiling point at or above 100°F (37.8°C).

NFPA Flammable & Combustible Classes

Flammables	Description	Boiling Point
Class IA	<73 ° F (22.8 ° C)	<100 ° F (37.8 ° C)
Class IB	<73 ° F (22.8 ° C)	≥100°F (37.8°C)
Class IC	≥73°F (22.8°C) and <100°F (37.8°C)	-

Combustibles	Description	Boiling Point
Class II	≥100°F (37.8°C) and <140°F (60°C)	-
Class IIIA	≥140°F (60°C) and <200°F (93°C)	-
Class IIIB	≥200°F (93°C)	-

It should be mentioned that flash point was selected as the basis for classification of flammable and combustible liquids because it is directly related to a liquid's ability to generate vapor, i.e., its volatility. Since it is the vapor of the liquid, not the liquid itself, that burns, vapor generation becomes the primary factor in determining the fire hazard. The expression "low flash - high hazard" applies. Liquids having flash points below ambient storage temperatures generally display a rapid rate of flame spread over the surface of the liquid, since it is not necessary for the heat of the fire to expend its energy in heating the liquid to generate more vapor.

A Code Compliant Cabinet Must Have:

- Reinforced 18-gauge construction.
- Top, bottom, sides, back and doors - double wall construction with 1 ½" air space.
- Leak proof sill 2" deep.
- Two vents with flash arrestors.
- Non-sparking, 3-point self-latching doors.
- Adjustable leveling legs.
- Locking handle.
- Static grounding bolt OSHA compliant.
- Large Warning label.



Code Compliance

OSHA 1910

1910.106(d)(3)(ii)(a). The bottom, top, door, and sides of cabinet shall be at least No. 18-gauge sheet iron and double walled. Joints shall be riveted, welded or made tight by some equally effective means.

NFPA 30

6.3.3.2.a. The bottom, top, door, and sides of the cabinet shall be at least No. 18-gauge sheet steel

6.3.3.2.b. Joints shall be riveted, welded, or made tight by some equally effective means.

FM 6050

3.2.1. Cabinets shall be of double wall steel or single wall wood construction. Steel thickness shall not be less than 18-gauge
Seams and joints shall be secured by riveting, welding, brazing, or some equally effective means.

OSHA 1910

1910.106(d)(3)(ii)(a). Metal cabinets constructed in the following manner shall be deemed to be in compliance. The bottom, top, door, and sides of cabinet shall be double walled with 1 1/2 -inch air space.

NFPA 30

6.3.3.2.a. The bottom, top, door, and sides of the cabinet shall be double-walled, with 38 mm (1 1/2 in.) air space.

FM 6050

3.2.1. Cabinets shall be of double wall steel or single wall wood construction. Steel thickness shall not be less than 18-gauge
Seams and joints shall be secured by riveting, welding, brazing, or some equally effective means.

OSHA 1910

1910.106(d)(3)(ii)(a). The bottom, top, door, and sides of cabinet shall be at least No. 18-gauge sheet iron and double walled. Joints shall be riveted, welded or made tight by some equally effective means.

NFPA 30

6.3.3.2.a. The bottom, top, door, and sides of the cabinet shall be at least No. 18-gauge sheet steel

6.3.3.2.b. Joints shall be riveted, welded, or made tight by some equally effective means.

FM 6050

3.2.1. Cabinets shall be of double wall steel or single wall wood construction. Steel thickness shall not be less than 18-gauge
Seams and joints shall be secured by riveting, welding, brazing, or some equally effective means.

OSHA 1910

1910.106(d)(3)(ii)(a). The bottom, top, door, and sides of cabinet shall be at least No. 18-gauge sheet iron and double walled. Joints shall be riveted, welded or made tight by some equally effective means.

NFPA 30

6.3.3.2.a. The bottom, top, door, and sides of the cabinet shall be at least No. 18-gauge sheet steel

6.3.3.2.b. Joints shall be riveted, welded, or made tight by some equally effective means.

FM 6050

3.2.1. Cabinets shall be of double wall steel or single wall wood construction. Steel thickness shall not be less than 18-gauge
Seams and joints shall be secured by riveting, welding, brazing, or some equally effective means.



Code Compliance

OSHA 1910

106(e)(6)(i) "General." Adequate precautions shall be taken to prevent the ignition of flammable vapors. Sources of ignition include but are not limited to open flames; lightning; smoking; cutting and welding; hot surfaces; frictional heat; static, electrical, and mechanical sparks;

FM 6050

3.2.1.F. . . . If a means for holding the door(s) open is provided, this device shall automatically release the doors in the event of a fire or exposure to excessive heat. The device shall release the closing mechanism when exposed to a temperature of 212°F (100°C) or less.

OSHA 1910

307(c)(3). Safe for the hazardous (classified) location . . . Note: The National Electrical Code, NFPA 70, contains guidelines for determining the type and design of equipment and installations which will meet this requirement. The guidelines of this document address electric wiring, equipment, and systems installed in hazardous (classified) locations and contain specific provisions for the following: (including) Grounding.

NFPA 30

ARTICLE 250.8. Grounding conductors and bonding jumpers shall be connected by exothermic welding, listed pressure connectors, listed clamps, or other listed means. . . Sheet metal screws shall not be used to connect grounding conductors or connection devices to enclosures.

FM 6050

3.2.1.E. A means shall be provided for attaching a separate grounding wire to the exterior of the cabinet. The attachment means shall be such that the cabinet finish does not interfere with the establishment of a proper ground.

OSHA 1910

1910.106(d)(3)(ii). Cabinets shall be labeled in conspicuous lettering, "Flammable - Keep Fire Away."

FM 6050

3.3.1. Cabinets shall, as a minimum, be labeled with the manufacturer's name, address, model number, and maximum liquid storage capacity.

3.3.2. All Approved cabinets shall be labeled with an FM Approval Mark

3.3.3. Cabinets shall be labeled with the conspicuous legend: FLAMMABLES – KEEP FIRE AWAY.

3.3.4. All markings shall be legible and durable.

FM 6050

3.4. The manufacturer shall provide instructions pertaining to proper leveling of the cabinet.

OSHA 1910

1910.106(d)(3)(ii)(a). The door shall be provided with a three-point lock.

FM 6050

3.2.1.B. Door(s) of the cabinet shall be equipped with a lockable, nonsparking, three-point latching mechanism.



Outdoor Safety Storage FAQ

What are outdoor storage lockers/buildings used for?

SECURALL® Outdoor Storage lockers/buildings are used to store Hazardous Materials, Flammables, Pesticides, Herbicides and other Agri-chemicals in a safe, secure storage area. Each product is equipped with a sump area designed to prevent leaky containers from contaminating the area.

Which materials require storage in a locker/building?

All Flammable & Combustible Liquids in an outside location must be stored in a designated storage unit. Other hazardous materials stored outside that may leak and cause contamination should also be stored in a designated storage unit. SECURALL® Outdoor Storage Lockers/Buildings are approved for storage of flammable & combustible liquids, except for storage of Class 1A and dispensing of Class 1A and 1B Flammable Liquids (refer to NFPA Code 30). Explosion relief is required for buildings storing and dispensing Class 1A and 1B Flammable Liquids. Securall® Haz-mat storage units come standard with Explosion Relief to meet this criterion. All standard models are FM Approved.

What is the difference between a locker and a building?

Lockers are used to store a quantity of chemicals that do not exceed the control area. Quantities of chemicals that exceed the control area require a Building for storage. Lockers are also less likely to be subject to State Approvals. Check with your local Authority having jurisdiction.

Can I store several different chemicals in the same locker/building?

You should classify the chemicals you intend to store according to hazard. Those that are compatible can be stored in the same outdoor storage unit. Incompatible chemicals should be stored in separate outdoor storage units or as required by OSHA.

How should I store incompatible materials?

Outdoor storage units can be designed with a separation wall allowing you to store incompatible materials. Safety cabinets can also be installed inside the locker or building to separate the different materials. Contact your local Authority having jurisdiction to determine the appropriate solution for your situation.

Where should outdoor storage units be placed?

SECURALL® Outdoor Storage units should be placed outside on a concrete slab. Consult your local Authority having jurisdiction regarding building separation distances and limits.

Which construction standards are relevant to outdoor storage lockers/buildings?

The following Building Codes are met: UBC, SBC, UFC, NEC and CAC. The following Industry Construction Standards are met: NFPA, BOCA, AWS, AISC, ANSI, ASTM, ICC and USPC. The following Federal Regulations are pertinent: EPA and OSHA.

What size locker/building do I need?

For any Outdoor Safety Storage unit, the storage capacity is ultimately determined by the capacity of the sump. OSHA requires sump capacity to contain 25% of the total holding capacity or 100% of the largest container whichever is greater; so if we were to measure by how many 55 - gallon drums you want to store in a locker/building, SECURALL® has standard sizes for 2, 4, 6, 9, 12, 16, 24, 32, 48, 64 and 80 - drum sump capacity. You can also custom-design the building by specifying the height, width and depth of the storage unit yourself.

Is there a maximum size for a locker/building:

Floor area should not exceed 1500 square feet.

Code Compliance

To help you store and dispense hazardous materials in a safe and efficient manner SECURALL® Safety Storage Buildings are designed to meet or exceed the following BUILDING CODES, INDUSTRY CONSTRUCTION STANDARDS and FEDERAL REGULATIONS:

Codes

- UBC - Uniform Building Code
- SBC - Southern Building Code
- UFC - Uniform Fire Code
- NEC - National Electric Code
- CAC - California Administrative Code

Standards

- NFPA - National Fire Protection Association
- BOCA - Building Officials & Code Administrators
- AWS - American Welding Society
- AISC - American Institute Of Steel Construction
- ANSI - American National Standard Institute
- ASTM - American Society For Testing & Material
- USPC - United States Product Code
- ICC - International Code Council

Regulation

- EPA - Environmental Protection Agency Regulations
- OSHA - Occupational Safety & Health Act Regulations.



Securall Products Are Manufactured in the USA

 **5122 N. State Rd. 39, LaPorte, IN 46350**

Phone: 1-219-326-7890

Toll Free: 1-888-326-7890

1-888-324-3780

Fax: 1-219-324-3780

Email: custserv@securallproducts.com